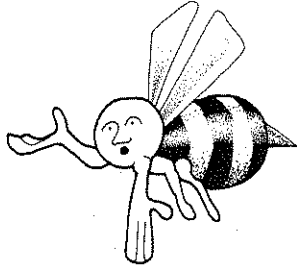


Hive Jive 7

Write the numbers 1-9 in the hexagons to correctly complete the equations.
Use each number once.

One number has been put in for you as a hint.

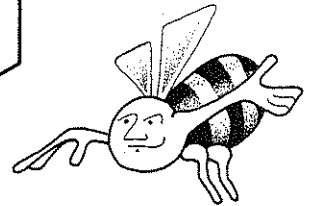
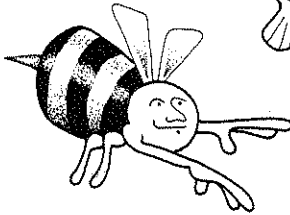
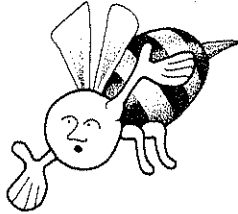


$$\boxed{} - \boxed{} \times \boxed{} = \boxed{20}$$

$$\boxed{} \times \boxed{1} \div \boxed{} = \boxed{4}$$

$$\boxed{} + \boxed{} - \boxed{} = \boxed{1}$$

$$\boxed{11} = \boxed{12} = \boxed{1}$$

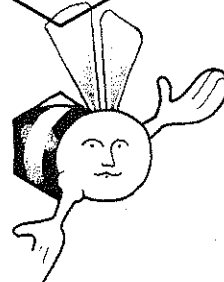


$$\boxed{} + \boxed{} + \boxed{} = \boxed{12}$$

$$\boxed{} \times \boxed{5} - \boxed{} = \boxed{13}$$

$$\boxed{} \div \boxed{} \times \boxed{} \div \boxed{} = \boxed{13}$$

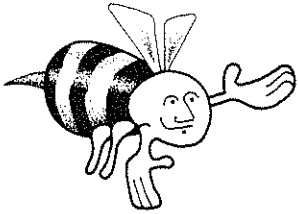
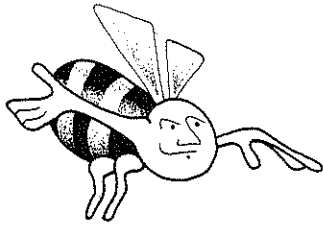
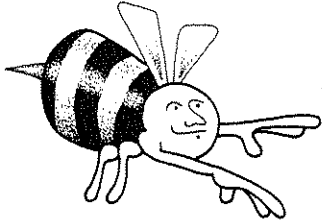
$$\boxed{2} = \boxed{27} = \boxed{4}$$



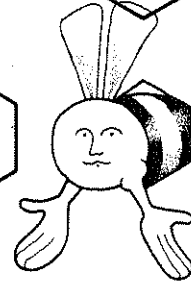
1
2 3
4 5 6
7 8
9

Hive Jive 8

Write the numbers 1-9 in the hexagons to correctly complete the equations.
Use each number once.



$$\begin{array}{rclcl} \square & - & \square & \times & \square = 20 \\ + & + & - & & \\ \square & - & \square & \times & \square = 9 \\ - & + & \times & & \\ \square & + & \square & - & \square = 10 \\ = & = & = & & \\ 2 & 12 & 14 & & \end{array}$$



$$\begin{array}{rclcl} \square & + & \square & \div & \square = 2 \\ + & + & - & & \\ \square & + & \square & - & \square = 14 \\ \div & - & \div & & \\ \square & + & \square & - & \square = 8 \\ = & = & = & & \\ 7 & 6 & 2 & & \end{array}$$

1
2 3
4 5 6
7 8
9

